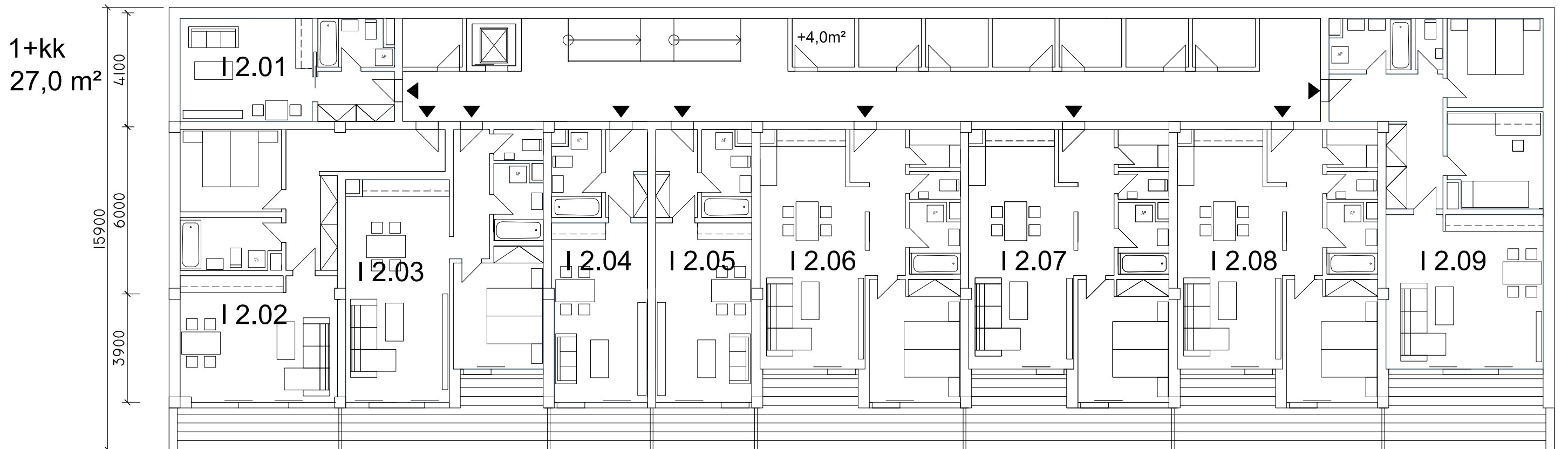
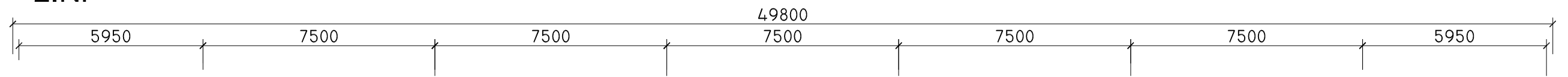


# 2.NP



2+kk  
58,0 m<sup>2</sup>  
+8,5m<sup>2</sup>

2+kk  
56,0 m<sup>2</sup>  
+14,5m<sup>2</sup>

1+kk  
32,0 m<sup>2</sup>  
+5,5m<sup>2</sup>

1+kk  
32,0 m<sup>2</sup>  
+5,5m<sup>2</sup>

2+kk  
62,0 m<sup>2</sup>  
+15,0m<sup>2</sup>

2+kk  
62,0 m<sup>2</sup>  
+15,0m<sup>2</sup>

2+kk  
62,0 m<sup>2</sup>  
+15,0m<sup>2</sup>

3+kk  
75,0 m<sup>2</sup>  
+15,0m<sup>2</sup>